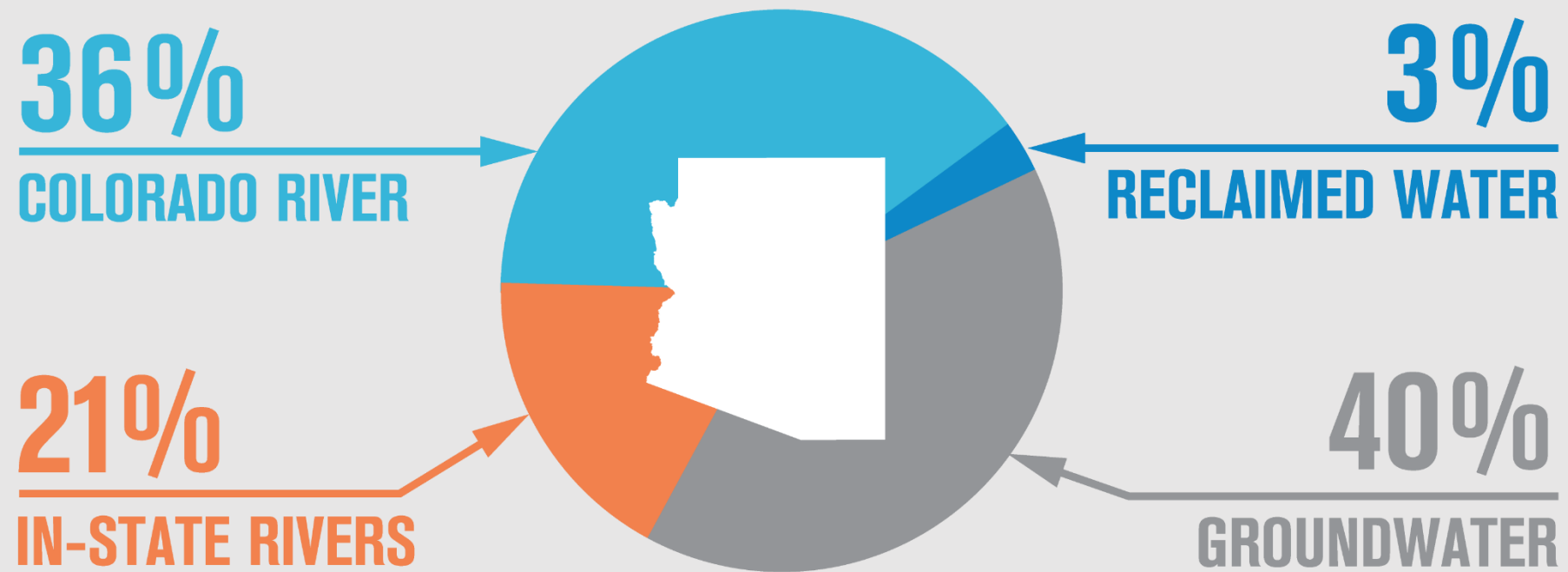


SENATE BILL 1306

HOUSE Bill 2731

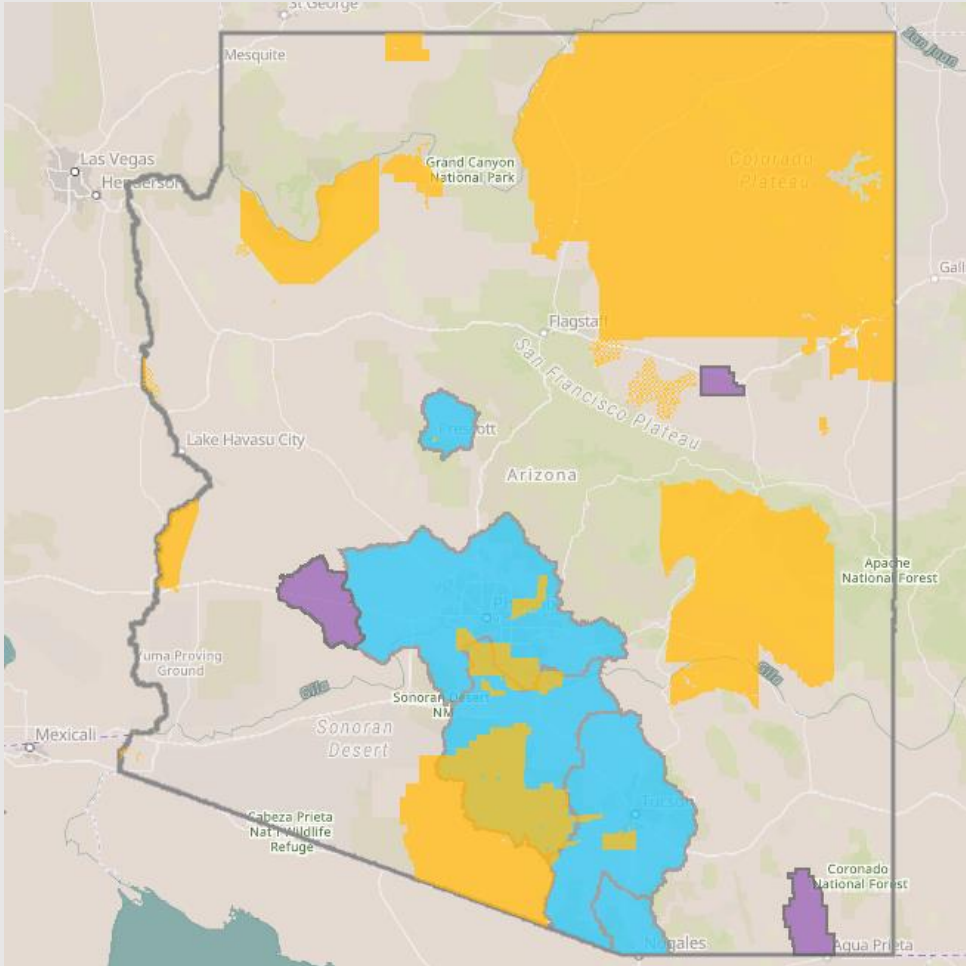
Local Groundwater Stewardship Areas

Arizona's Annual Water Supply Portfolio



SOURCE: ADWR, 2018

Source: Arizona Department of Water Resources



1980 Groundwater Management Act

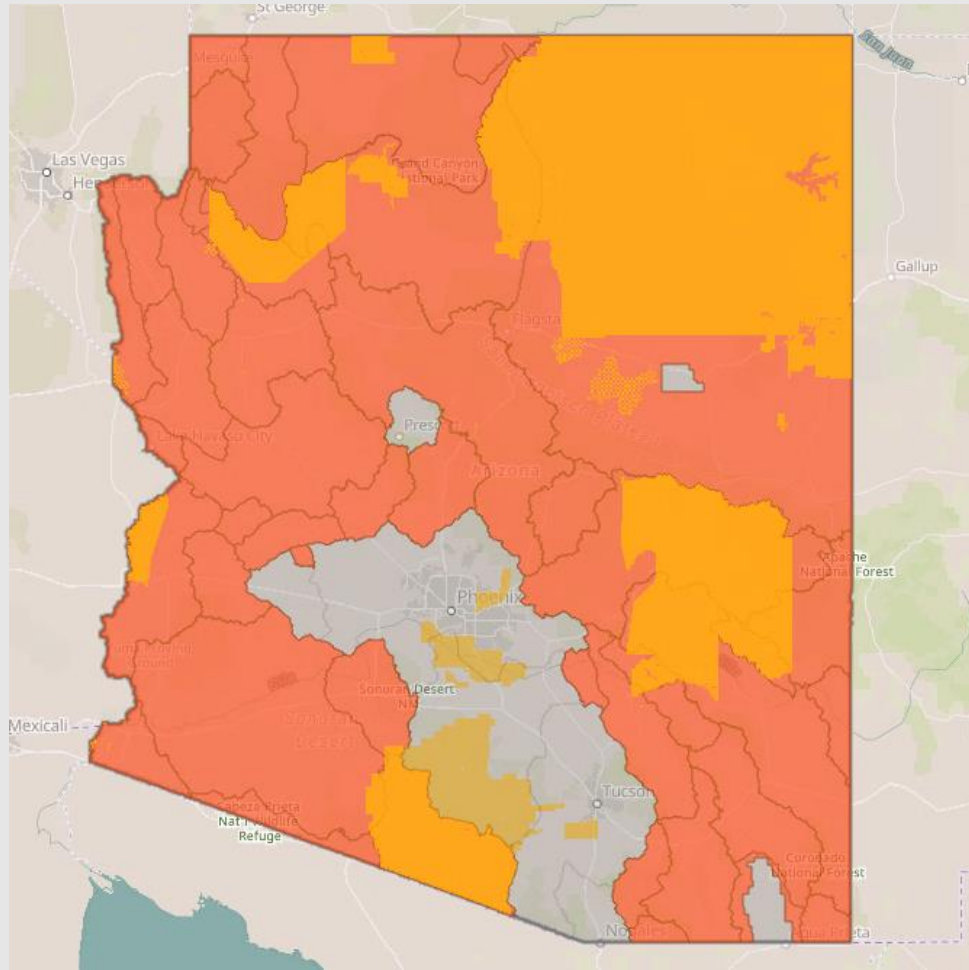
tribal lands in gold

AMAs: Active Management Areas

&

INAs: Irrigation Non-Expansion Areas

Currently 6 AMAs and 4 INAs in AZ



Greater (“Rural”) Arizona unregulated groundwater basins tribal lands in gold

Reasonable use

Groundwater is still largely governed under the doctrine of “reasonable use” outside of the AMAs, in (the non-Tribal areas of) what we often refer to as “rural” Arizona.



Impacts:

- Declining groundwater levels
- Impacts to existing wells
- Land subsidence
- Diminishment of community water supplies
- Water quality risks
- Declining water levels in rivers and streams
- Conflicts among neighbors

<https://www.youtube.com/watch?v=xQOIM9JEPPk>

PURPOSE

With the Colorado River at a historical low level, coupled with colossal fissures, land subsidence, and resident wells drying up across rural Arizona the need for new tools is vital. Rural Arizonans are forced to choose between leaving groundwater virtually unprotected or implementing groundwater regulations designed for large, urban parts of Central Arizona. There is a better way. Local Groundwater Stewardship Areas (LGSA or Stewardship Areas).

DESCRIPTION

Local water stakeholders serve on a Council to develop a local groundwater management plan. The plan is developed through an open public process and submitted to the Arizona Department of Water Resources. The plan shall include one or more goals for the LGSA. It may include recommendations to cities, towns, counties, and other public agencies and proposed actions for implementation by ADWR for achieving the adopted goals.

FORMATION

LGSA's may be formed three ways:

- **Designation by a County Board of Supervisors**
- **Designation by the Director of ADWR**
- **Petition to the Director by 25% of groundwater users or 10% of registered voters within the proposed boundary**

COUNCIL MAKEUP – One County, 9 Members

1 – County Supervisor/Designee

1 – Mayor/Council Member/Designee

1 (at least) – Agricultural Interest

1 (at least) – Industrial Interest

1 (at least) – Municipal/Residential Interest

1 (at least) – Tribal Interest

1 or 2 – At Large Members/Related Knowledge and Expertise

COUNCIL MAKEUP – Two or More Counties, 13 Members

County Supervisor/Designee from Each County

Mayor/Council Member/Designee from Each County

1 (at least) – Agricultural Interest

1 (at least) – Industrial Interest

1 (at least) – Municipal/Residential Interest

1 (at least) – Tribal Interest

1 or 2 – At Large Members/Related Knowledge and Expertise

COUNCIL POWERS

The Council must establish a management plan for the LGSA that includes a goal or goals, a description of current conditions, a method for monitoring and reporting on the area's Progress towards achieving its goals.

To achieve this the plans may include two types of action:

- 1. Recommendations to local public entities and utilities with relevant jurisdiction in the Stewardship Area**
- 2. Proposed actions to be implemented by ADWR through petition**

SUPPORT

\$50,000,000 are identified to be deposited in the ADWR Local Groundwater Stewardship Fund annually from State Lottery monies

- No new taxes or fees are involved**

ADWR is required to spend all monies in the Local Groundwater Stewardship Fund to Implement and support Local Groundwater Stewardship Areas that are established

The LGSA Council may request technical and planning assistance from ADWR

The LGSA Council may form a technical committee that shall include a member from ADWR and may include members of the Council and the general public

REVIEW

The Management Area Plan is reviewed every ten years by the County

Conditions that caused the formation of the LGSA are reviewed by the County every ten years

After review, the County shall either extend the designation for another Eight years or rescind the designation of the LGSA

QUESTIONS?